

SECURE TRANSMISSION OVER EXTENDED IP NETWORKS

The SIG router provides secure IP VPN links with remote devices connected to Internet, GSM-GPRS-UMTS network or an Intranet.

It is particularly effective to create remote control systems between a supervision network and remote industrial devices.

It authenticates remote routers, establishes an encrypted tunnel with each of them and restricts access to the company network to remote devices according to authorised access rights.

It also constitutes a secure access point for remote maintenance of machines connected to a company network.

Applications

- Remote control networks on Internet or Intranet
- Remote control networks on GSM-GPRS-UMTS
- Remote maintenance access point via Internet

Key features

- VPN SSL or IPSEC or PPTP
- 128 VPN
- Firewall SPI
- Html configuration



Distribué par :



Contact :
hvssystem@hvssystem.com

Tél : 0326824929
Fax : 0326851908

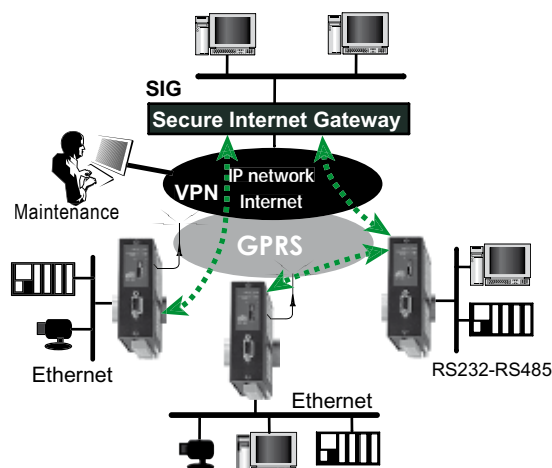
Siège social :
2 rue René Laennec
51500 Taissy
France

www.hvssystem.com

www.eticlecom.com



Extended IP network



General characteristics	
Dimensions	42 x 425 x 230 mm (h, l, p)
Protection	IP20
Power	■ 110 - 230 VAC - 60 W
EMI	<ul style="list-style-type: none"> ■ ESD : EN61000-4-2 : Décharge 6 KV ■ RF field : EN61000-4-3 : 10V/m < 2 GHz ■ Transient : EN61000-4-4 ■ Surge V : EN61000-4-5 : 4KV line / earth
Safety	EN 60950 - UL1950,
Banned substances	2002/95/CE «ROHS» european union directive
Operating T°	0°C /+ 40°C - Humidity 5 to 95 %

Security functions	
VPN	<ul style="list-style-type: none"> ■ IPSEC, TLS-SSL, L2TP / IPSEC ■ Preshared key / X509 Certificates ■ Encryption : 3DES & AES 128-192-256 ■ Authentication : MD5 & SHA-1 ■ 128 VPN tunnels
Firewall	<ul style="list-style-type: none"> ■ Stateful packet inspection ■ Source and destination IP@ & ports filters ■ 50 rules
Log	<ul style="list-style-type: none"> ■ Date and time stamp ■ Events : Connection, restart, alarm

IP Router/ IP@ / RAS function /management	
IP router	<ul style="list-style-type: none"> ■ Static routes ■ RIP V2 or OSPF
DNAT	<ul style="list-style-type: none"> ■ Destination IP address translation
IP @	<ul style="list-style-type: none"> ■ WAN : DHCP client or fixed IP @ ■ LAN : DHCP client or server or fixed IP @
DNS	<ul style="list-style-type: none"> ■ WAN : DYN DNS ■ LAN : DNS relay & DNS server
RAS	<ul style="list-style-type: none"> ■ 25 users list with Login + PWD ■ PPTP or L2TP / IPsec or TLS ■ M2Me_Secure & M2Me_Connect compatible
Management	SNMP V2 standard MIB
Configuration	Html server

Ordering information	SIG
Ethernet 10 / 100	3
Tunnel VPN IPSEC et SSL	•
Fire-wall «statefull packet inspection»	•
Configuration html	•



Ethernet	
Ethernet port	<ul style="list-style-type: none"> ■ 10/100 auto MDX / MDIX ■ 1 port LAN ■ 1 port WAN ■ 1 configuration port

13, Chemin du Vieux Chêne
38240 Meylan France
Tél : 33 4 76 04 20 00
Fax : 33 4 76 04 20 01

www.etictelcom.com

